



**Feature -**

thru-hole terminal  
SPST, SPDT, momentary function

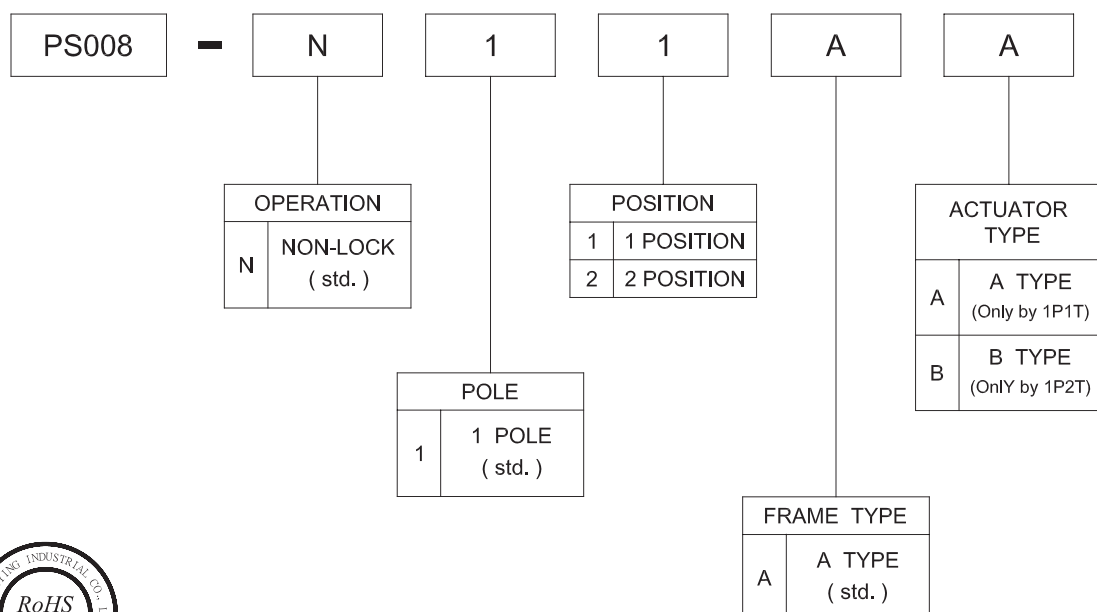
**Application -**

instrumentation  
telecommunications and networking equipments  
computer and peripherals  
office and home electrical appliances

► **SPECIFICATIONS**

SWITCH SPECIFICATIONS	
POLE - POSITION	Momentary action , 1P1T or 1P2T
CONTACT RATING	1Amp with resistive load @ 125VAC or 28VDC
CONTACT RESISTANCE	20 mΩ MAX. 1.5 V DC ; 100 mA , by Method of Voltage DROP
INSULATION RESISTANCE	1000 MΩ MIN. 500 V DC
DIELECTRIC STRENGTH	Breakdown is not Allowable ; 1500 V AC for 1 Minute
OPERATING FORCE	250 ± 100 gf
OPERATING LIFE	30,000 cycles
OPERATING TEMPERATURE RANGE	-30°C ~ 85°C
TOTAL TRAVEL	SPST : 1.5 ± 0.3 mm , SPDT : 1.2±0.3mm

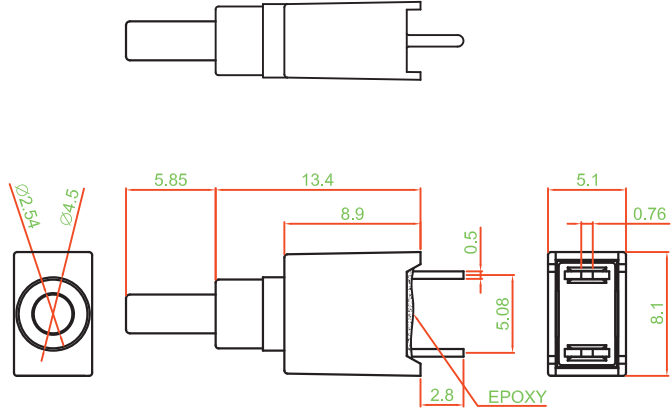
► **HOW TO ORDER**



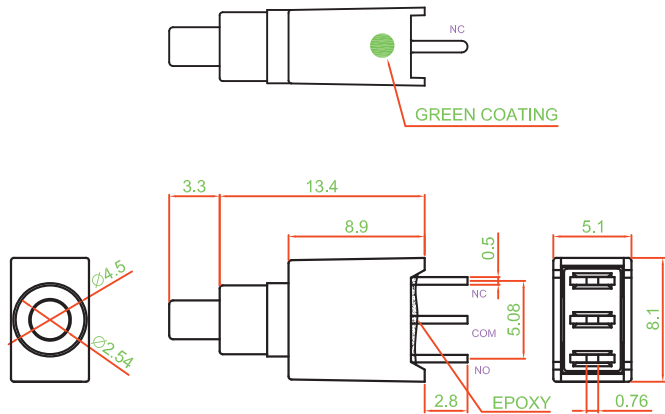
**PS008 SERIES**  
**PUSH BUTTON SWITCH**

**▶ DIMENSION**

**PS008-N11AA**



**PS008-N12AB**

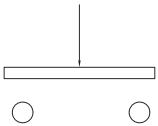


**▶ CIRCUIT**

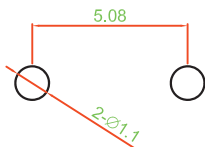
**▶ P.C.B LAYOUT**

**▶ MATERIAL**

1P1T :

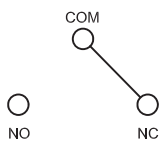


1P1T :

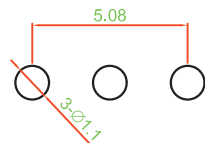


- FRAME : PA + GF
- ACTUATOR : PA + GF
- BASE FRAME : PA + GF
- TERMINAL : BRASS SILVER PLATING

1P2T :



1P2T :



**▶ UNIT WEIGHT**

- PS008-N11AA :  $0.6 \pm 0.05$  g / pc
- PS008-N12AB :  $0.56 \pm 0.05$  g / pc